

# Support for Ukrainian war refugees by personal status

| Who is entitled to?  | Personal status   |  |   |
|--|---|--|---|
|  | Ukrainian war refugees who have been granted collective temporary protection in Lithuania since March 4, 2022 | Ukrainian war refugees holding a registration document issued by the Migration department and awaiting an individual decision on granting temporary protection | Ukrainian war refugee having temporary residence permit for temporary protection reasons issued by the Migration Department under the Ministry of the Interior of The Republic of Lithuania |
| To work without a work permit or a decision on the compliance of a foreigner's work with the needs of the labor market                 | +   | +  | +   |
| To work under a temporary employment contract  | +   | +  | +   |
| To carry out independent activities  | +   | +  | +   |
| To receive labor market services and employment support measures provided by the Employment service                                    | +   | +  | +   |
| Social support for students (free meals for students and assistance in purchasing school supplies at the beginning of the school year) | +   | +  | +   |
| After acquiring the required length of social insurance - sickness, maternity, paternity and other social insurance benefits           | +   | +  | +   |
| Food packages, food cards  | +   | +  | -   |
| Hygiene aid kits   | +   | +  | -   |
| Child hygiene kits   | +   | +  | -   |
| Child benefits   | -   | -  | +   |
| Cash social assistance (social allowance, compensation for heating, drinking water and hot water)                                      | -   | -  | +   |
| One-time accommodation allowance   | -   | -  | +   |
| 6 months compensation for pre-school education   | -   | -  | +   |
| Compensation for part of the rental  | -   | -  | +   |
| Social assistance pensions   | -   | -  | +   |
| Social services  | -   | -  | +   |
| Disability determination   | -   | -  | +   |
| Assistance, benefits and services for people with disabilities   | -   | -  | +   |
| Support in case of the loss of a loved one (funeral allowance)   | -   | -  | +   |

# Child benefits

Ukrainians granted temporary protection in Lithuania will be entitled to child benefits:

|  |   |
|--|---|
| Child benefit (child money)                    | It is paid for each child under 18 or up to 23 if the child is studying under a general curriculum  |
| An additional child benefit is provided        | It is paid to a disabled child, as well as to each child from a large or low-income family as long as the family is considered large or low-income  |
| One-time child benefit                         | It is paid at birth, adoption (regardless of age) or custody (up to 1.5 years, if not paid at birth or first custody)   |
| One-time pregnant woman benefit                | It is paid to a woman who is not entitled to maternity benefit from Sodra when there are 70 calendar days left until the expected date of childbirth  |
| Benefit for the birth of twins, triplets, etc. | It is paid to one of the parents until the children are 2 years old.  |
| Childcare allowance for a student              | It is paid from the child's birth to the age of 2, if the child's parent, adoptive parent or guardian (caregiver) applying for the benefit is studying or is not entitled to childcare benefit from Sodra   |
| Care allowance                                 | During the care period, it is paid to a child for whom care has been established in a family, care center or child care institution. At the end of a child's care, a person under the age of 24 may continue to receive care benefit if the person is studying  |
| Targeted supplement to care allowance          | During the care period, it is paid to the family, and care center caring for the child. At the end of the care period, if the child has remained with the former guardian and is still in school, the former guardian is entitled to continue to receive this benefit, but not longer than until the former ward reaches the age of 23. |

Ukrainian families raising school-age children who start school in Lithuania are entitled to free school meals and, at the start of the new school year, to school supplies assistance.

A monthly allowance for raising children can also be obtained.

|   |   |
|---|---|
| Student catering                                | Preschoolers, first-graders and second-graders are granted without assessing family income, and older students are granted if the average monthly income per family member is less than EUR 349,5 |
| School supplies assistance                      | It is granted if the average monthly income per family member is less than EUR 349,5  |
| Monthly allowance for the education of children | It is granted and paid for 6 months.  |

## Where to apply?

To the municipality of residence

# Cash social assistance

---

## Social benefit

when the average income per person is less than 256,3 Eur/month.

## Compensation for heating costs

when heating costs exceed 10% of the difference between the income and 2 state-supported income amounts (466 EUR) for each family member or 3 SSI amounts (699 EUR) per resident.

## Compensation for hot water costs

when hot water costs exceed 5% of family or personal income

## Compensation for drinking water costs

when the cost of drinking water exceeds 2% of family or personal income

### Where to apply?

To the municipality of residence.

*Unemployment social insurance benefits are not included in the calculation of income for cash social assistance, family or personal income, child money and 20-40% (depending on family composition) of work income.*

State-supported income (SSI) – **233 Eur**

---



#### Note.

Ukrainians who have been granted temporary protection in Lithuania have the right to social assistance.

# Reimbursement for part of the rental

| Who is entitled to the compensation?  | What the amount is?  | When is it paid?   |
|---|--|--|
| <p>Compensation for part of the lease is granted to those individuals:</p> <ul style="list-style-type: none"><li>rented a property in the municipality where they declared their place of residence or are registered as having no place of residence and registered the rental contract in the Real Estate Register.</li></ul> | <p>The amount of compensation depends on the municipality where the persons and families lease a house, on the area of the leased house and on the number of family members.</p> | <p>Compensation for the part of lease is paid for the period from the day of concluding the lease agreement, but not earlier than from the day of applying for the compensation.</p> |

## Where to apply?

To the declared municipality of residence.



### Note.

Ukrainians who have been granted temporary protection in Lithuania have the right to social assistance.

# One-time accommodation allowance

---

**It is paid once. Its size depends on the number of people living together who have received temporary protection.**

## **Who is entitled to the benefit?**

Residents working in Lithuania or registered with the Employment service, as well as persons studying in general education institutions, people of retirement age, single pregnant women and single parents raising children under 2 years of age.

## **Where to apply?**

One of the household members who has received temporary protection shall apply to the municipality of residence.

## **IMPORTANT!**

A lease agreement for residential premises concluded for at least 6 months and registered in a public register indicating the number of persons living together in those premises who have received temporary protection shall be submitted.



### **Note.**

Ukrainians who have been granted temporary protection in Lithuania have the right to social assistance.

# Social assistance pensions

| SOCIAL ASSISTANCE PENSIONS                  | WHO CAN GET THEM?  |
|---|--|
| Social assistance disability pensions       | <p>Parents of children with a disability (for children).</p> <p>Adults with a working capacity level (who lost 60% or more of working capacity).</p> <p>Persons declared unable of work or partially able to work up to the age of 24 (who lost 45% and more).</p> <p><b>IMPORTANT!</b> The disability and incapacity for work service shall establish the disability.</p>   |
| Social assistance pensions for the elderly; | Persons of retirement age (64 years and 8 months for men, 64 years and 4 months for women in 2024).  |
| Social assistance pensions for orphans      | Orphans under 18 (or full-time students over 18, students of general and formal vocational curricula while studying, but not longer than until 24).  |
| Social assistance compensation              | <ul style="list-style-type: none"><li>Parents (adoptive parents) who, until 31/12/1994, have been caring at home for at least 8 years for disabled children (or adoptive children) or children (or adoptive children) who have been recognised as disabled since childhood, or who became disabled before the age of 18;</li><li>Mothers who gave birth to 5 or more children before 31/12/1994 and raised them.</li></ul> |

## Where to apply?

To the nearest territorial branch of Sodra or online <https://www.sodra.lt/en/>. You need to have an e-signature, mobile signature or electronic banking.



### Note.

Ukrainians who have been granted temporary protection in Lithuania have the right to social assistance.

# Social services

For children and families

Persons of working age with disabilities

Persons of retirement age

For individuals and families at social risk

General or special social services may be provided in municipalities to persons holding a temporary or permanent residence permit in Lithuania

General social services  
(may be provided without the need  
for social services)

Special social services (if general social services are not  
enough) in a person's home or social services institution



- Information
- Counseling
- Mediation and representation
- Catering
- Provision of clothing and footwear
- Organization of transport
- Social and cultural services
- Organization of personal hygiene and care services, etc.

## Social supervision

The following services are provided according to the need for social services:

- Help at home
- Development, support and restoration of social skills
- Accommodation in a home for independent living
- Psychosocial assistance
- Day care for children
- Accommodation in a shelter
- Temporary respite
- Financial support

## Social care

The following services are provided according to the need for social care:

- Day care
- Short-term social care
- Long-term social care
- Temporary respite

Information, counseling, mediation and representation are provided free of charge, and the prices of other services are set by the municipality or the institution providing social services.

The municipality has the right to exempt a person (family) from paying for social services

## Where to apply?

To receive municipally funded services, you should contact the municipal administration at your place of residence

## IMPORTANT!

In crisis cases - when a person (family) experiences physical or psychological violence or physical or emotional safety of that person is threatened, the person (family) may apply to a municipality other than at the person's (family's) place of residence for general social services and/or social care, and in case of an emergency – directly to a social service provider.

# Disability in Ukraine = disability in Lithuania

## What is important to know?

The group of disability established in Ukraine for the Ukrainians under temporary protection in Lithuania shall be equated to the level of disability, working capacity and special needs according to the following principle:

### Persons under 18 years

Disability group I is equated to severe level of disability

Disability group II is equated to average level of disability

Disability group III is equated to light level of disability

**Important!** If the disability group is not indicated in the UA certificate, disability is regarded to be on the medium disability level

### Persons over 18 years old until attainment of the age eligible for old-age pension:

Disability group I is equated to working capacity of 20 percent

Disability group II is equated to working capacity of 35 percent

Disability group III is equated to working capacity of 45 percent

### Equation or determination of disability

1. If a Ukrainian **HAS** a document about the disability group determined in **his/her** country, the disability group established in Ukraine shall be equated to the level of disability, working capacity and special needs determined in Lithuania. Such person has to submit the certificate issued by the Ukrainian consular institution about the determined disability group to the Agency for the Protection of the Rights of Persons with Disabilities (APRPD).

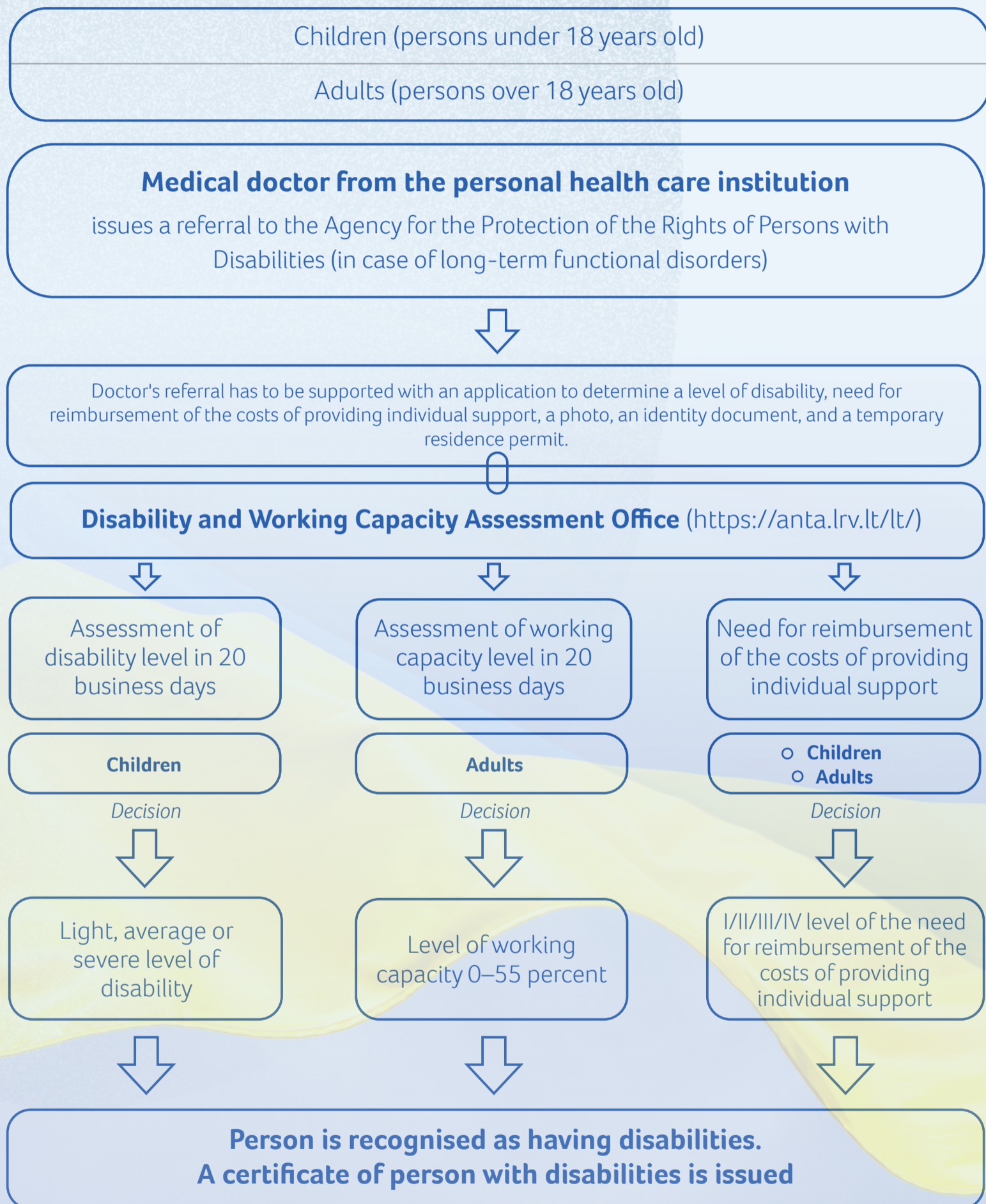
2. Or the person **may refer to APRPD in general procedure for establishment of the level of disability, working capacity and special needs in accordance with the Lithuanian legal acts.** In this case, it does not matter whether the disability group has been established in Ukraine. However, it is **IMPORTANT TO HAVE a general practitioner's referral for disability's assessment.**

#### IMPORTANT!

If a level of disability or working capacity is determined for the Ukrainian under temporary protection on Lithuania in accordance with the Lithuanian legal acts and the person or his/her representative refers to APRPD and asks to determine the level of disability or working capacity, the disability's equation shall not be performed.

# Disability determination

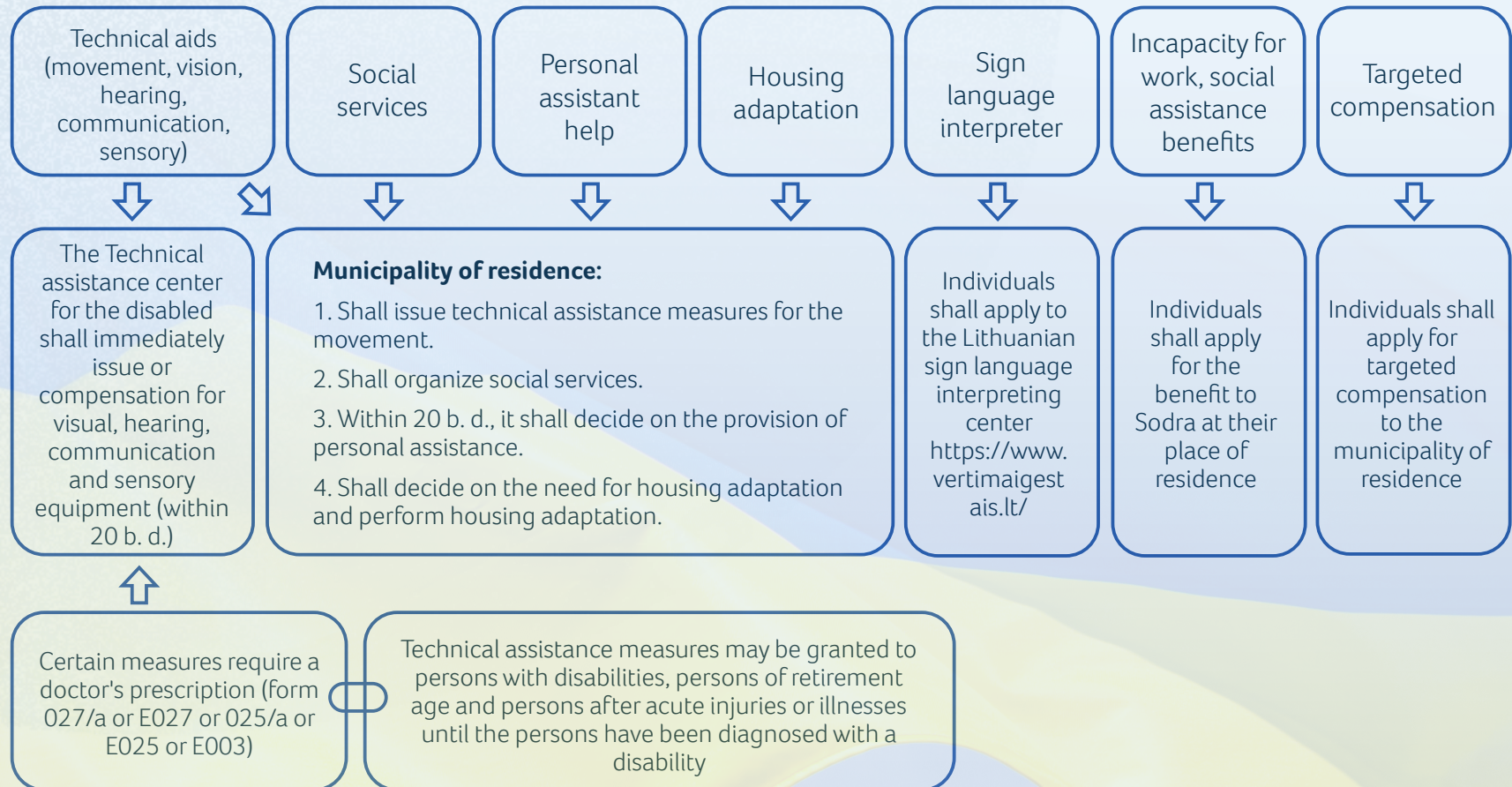
## What is important to know?



### IMPORTANT!

An important condition for equating a disability with a disability is that the Agency for Protection of the Rights of Persons with Disabilities (APD) must present a certificate issued by the Ukrainian consular office in Lithuania stating that the person has a disability. A certificate of person with disabilities is issued.

# Assistance, benefits and services for the disabled



## Note.

Ukrainians who have been granted temporary protection in Lithuania have the right to social support and social services.

# Benefit for the loss of a loved one

---

|                   |                                 |
|-------------------|---------------------------------|
| Funeral allowance | <b>Who can get it?</b>          |
|                   | The person burying the deceased |

**Where to apply?**  
To the municipality at your place of residence



**Note.**

Ukrainians who have been granted temporary protection in Lithuania have the right to social assistance.